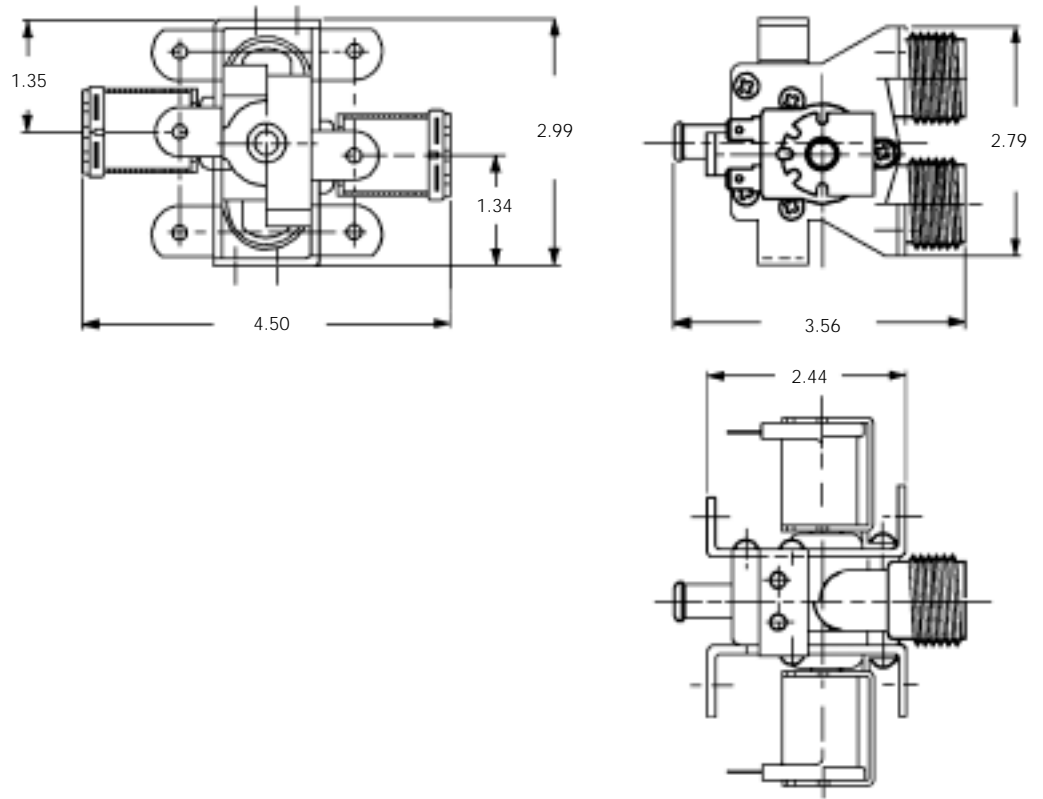


# CLOTHESWASHER VALVES

## SPECIFICATIONS

### N-10 Model specifications for the following parts:

CW-10  
CW-12



## SPECIFICATIONS

### N-51 Model specifications for the following parts:

CW-151  
CW-151A  
CW-152  
CW-153  
CW-154  
CW-155  
CW-1510

This model is like the N-50, but was designed for applications where a flow control is required. This model also has a reduced air gap operator, or water hammer suppression feature.

