

MOTORS

EVAPORATOR FAN MOTOR - EXACT REPLACEMENT

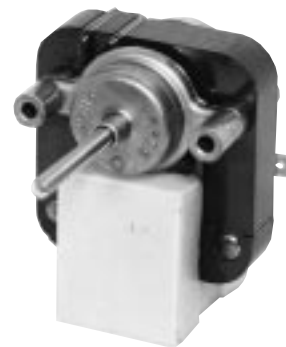
The Robertshaw Evaporator Fan Motors are designed to be exact replacements for the original OEM unit. They fit the application without unnecessary adapting and/or rebracketing. Models for specific OEM applications are shown below. Units are 120 volts 50/60 Hz with impedance protection.

ADMIRAL



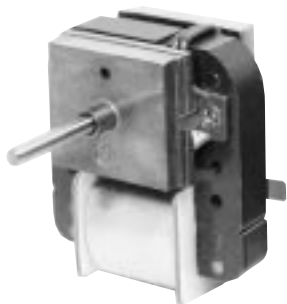
33-334
Replaces: Admiral 55394-7

ADMIRAL



33-335
Replaces: Admiral 56488-2

FRIGIDAIRE



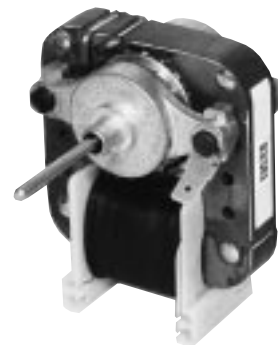
33-333
Replaces: Frigidaire 1137820

FRIGIDAIRE



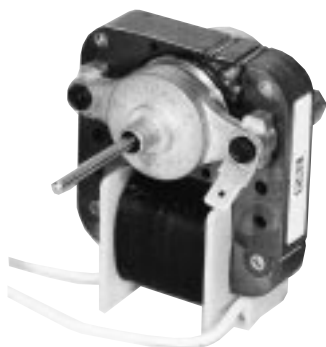
33-336
Replaces: Frigidaire 8004176

GENERAL ELECTRIC



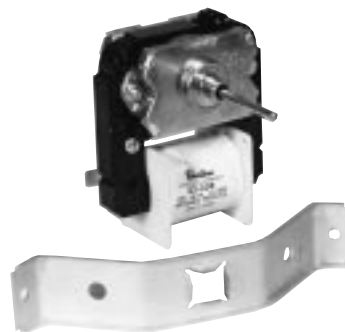
33-305
Replaces: G.E. WR60X60, WR60X84

GENERAL ELECTRIC



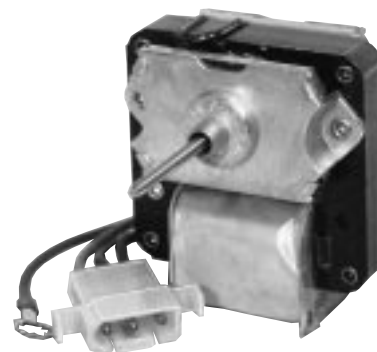
33-317
Replaces: G.E. WR60X85, WR60X100,
WR60X104

GENERAL ELECTRIC



33-338
Replaces: WR60X162

GIBSON



33-336
Replaces: Gibson G158289