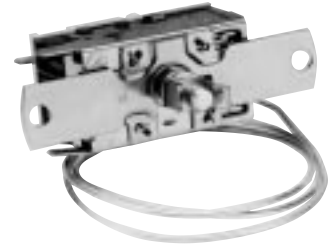


COLD CONTROLS CANADIAN MODELS

ORDERING DATA

UNI-LINE ORDER NO.	TEMP °C		CAPILLARY LENGTH (MM)	STYLE	REFERENCE NUMBER
	N.I.	N.O.			
A10-4467	-16	-24	300	B	DR4921
A10-4471	-13	-20	900	B	DR50
K-108	-15	-21	380	H	DR108
K50-1167-99	-17	-23.5	1100	A OR J	DR1167
K50-1271	-15.3	-22.8	625	D	DR1271
K50-1277	-13.3	-17.8	600	A	DR20
K50-1280	3.3	-3.3	300	K	DR252
K50-1281	-6	-5.6	300	K	DR86
K50-1297	-14.4	-24.4	600	K	DR1297
K50-1389	-3.3	-1.1	500	I	DR120 & 748
K50-3072	-16	-23	300	J	DR65
K50-6079	2.5	-18.9	400	L	DRH017
K50-6080	-1.1	-21	400	L	DRH029
K50-6093	-7.2	-21	900	H	DR6093
K50-6096	-6	-17.5	800	K	DR6096
K50-6097	0	-18	400	L	DRH038
K50-6102	-1	-11	1200	J	DR70
K50-6506	-7.1	-16.5	600	A	DR10
K54-1162	-16	-22.8	700	G	DR1142
K54-3114	-17	-23	700	D	160151
K59-4048*	2.6	-18	900	A	DR90
K59-4877	4	-18	1100	J	DR110
K59-4878*	3	-71	1000	E	DR4878

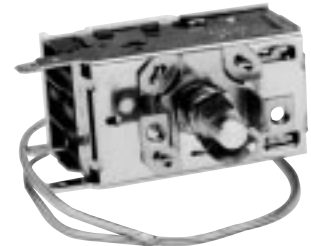
*Cold out warm out NOTE: Temperature ratings are in degrees Celsius.



STYLE A



STYLE B



STYLE C



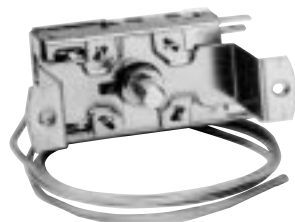
STYLE D



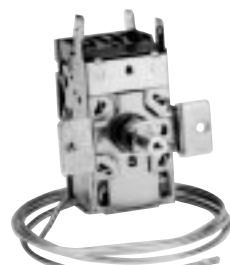
STYLE E



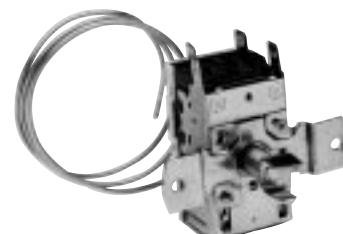
STYLE F



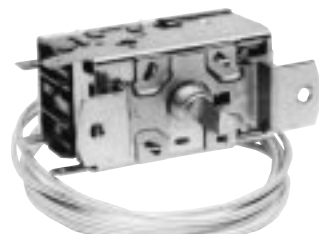
STYLE G



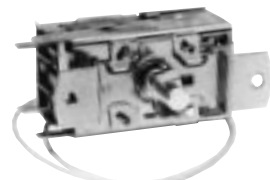
STYLE H



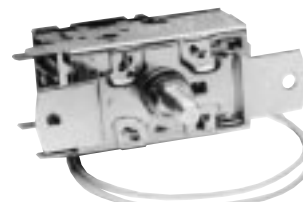
STYLE I



STYLE J



STYLE K



STYLE L