

COLD CONTROLS

SPECIFICATIONS

At altitudes of 2,000 feet or above, make altitude corrections by adjusting both the cut-in and cut-out screws. Turn each screw in a counter-clockwise rotation using the charts below.

CONSTANT CUT-IN TYPES

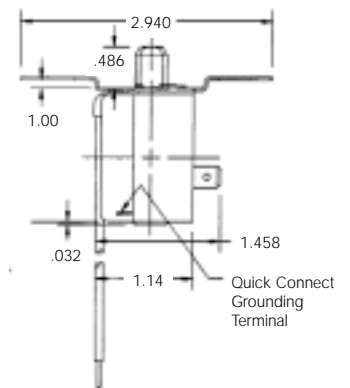
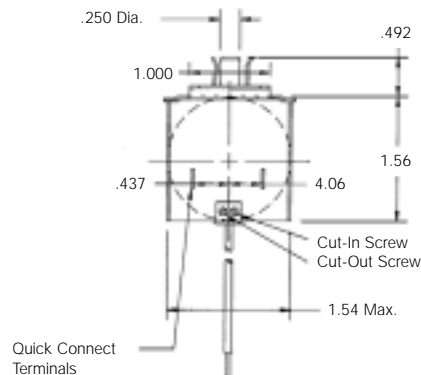
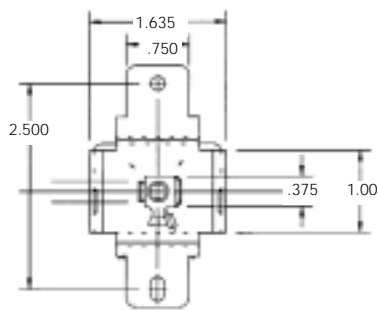
CC-129, CC-154, CC-155, CC-300

All other direct replacement cold controls are of the constant differential type.

This is a typical cold control. Actual dimensions vary with each individual control. Turn cut-in or cut-out screws clockwise to obtain colder operating temperatures.

Electrical Ratings			Straight Range		Constant Cut-in		
Volts AC	Full Load	Motor Locked	Altitude in Feet	Number of Turns	Altitude in Feet	Number of Turns	Exceptions: (Straight Range)
125	16 Amps	80 Amps	2,000	7/60	2,000	4/60	
250	8 Amps	40 Amps	3,000	13/60	3,000	7/60	
			4,000	19/60	4,000	10/60	CC-117
			5,000	25/60	5,000	13/60	CC-123
			6,000	31/60	6,000	16/60	CC-134
			7,000	37/60	7,000	19/60	CC-136
			8,000	43/60	8,000	22/60	
			9,000	49/60	9,000	25/60	
			10,000	55/60	10,000	28/60	

DIMENSIONS



ORDERING DATA

UNI-LINE ORDER NO.	TEMPERATURE RANGE	COLD		NORMAL		WARM		CAPILLARY LENGTH	ELEMENT FILL
		CUTOUT	CUTIN	CUTOUT	CUTIN	CUTOUT	CUTIN		
CC-105	+ 3 to +43	+3	+16	+20	+33	+30	+43	16"	R40
CC-109	-13 to +23	-14	+ 9	-8	+15	-1	+23	26"	R12
CC-111	+24 to +44	+24	+32	+31	+39	+36	+44	16"	R40
CC-112	+21 to +44	+21	+31	+27	+37	+34	+44	29"	R12
CC-114	-18 to +13	-18	-6	-9	+ 3	+ 1	+13	12"	R22
CC-124	+26 to +44	+26	+31	+34	+39	+38	+44	18"	R40
CC-125	-17 to +18	-17	-4	-6	+ 7	+ 5	+18	45"	R12
CC-129	-13 to +37	-13	+37	-7	+37	-2	+37	30"	R12
CC-140	+ 7 to +37	+ 7	+19	+18	+30	+25	+37	27"	R134
CC-154	-17 to +36	-17	+36	-10	+36	+ 1	+36	45"	R12
CC-155	-18 to +37	-18	+37	-9	+37	-1	+37	42"	R12
CC-157	+18 to +41	+18	+30	+25	+35	+32	+41	30"	R40
CC-300	-18 to +38	-18	+38	-11	+38	- 5	+38	42"	R12
CC-302	+10 to +41	+10	+28	+18	+34	+27	+41	15"	R134