

# COMMERCIAL REFRIGERATION DEFROST CONTROLS

## RM SERIES

### FEATURES

#### FRAME MODULES:

- Four or 8 circuits available.
- Two snap-in base brackets per frame section for mounting. 7/32" diameter mounting holes for #12 screws.

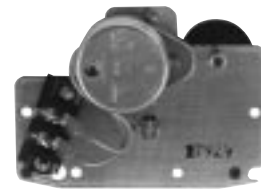
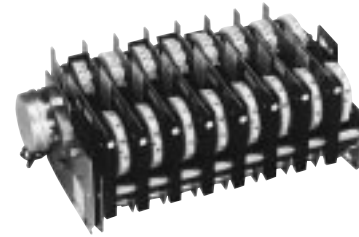
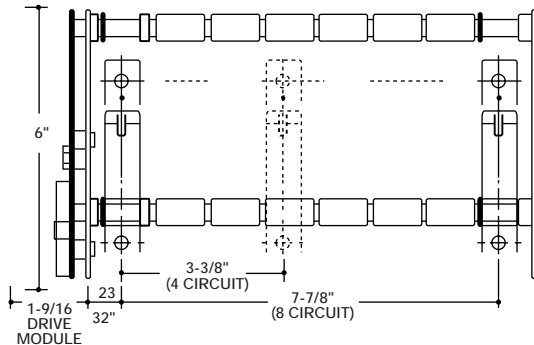
#### MOTOR MODULES:

- Heavy duty synchronous industrial type motor with sealed permanently lubricated gear train.
- Up to 24 program modules can be driven with one motor.
- Input voltage: 120 or 208-240 volts 60 Hz.
- Two 1/4" male push-on terminals on drive module.

#### PROGRAM MODULES:

- Defrost initiation is adjustable from one-12 operations per circuit, per day; minimum 2 hours required between successive operations.
- Mechanical defrost termination is adjustable from 6-106 minutes in one-minute increments.
- Solenoid termination is optional. Instantaneous transfer if solenoid is energized at time of defrost initiation.
- Two SPDT snap switches per module.
- 3/16" male push-on switch terminals.
- Switch rating: 10 amps, 1/3 hp, 120-240 Vac; 345 VA pilot duty.

### DIMENSIONS



### ORDERING DATA

UNI-LINE ORDER NO.	CIRCUIT	HOUR	WITH SOLENOID	WITHOUT SOLENOID	VOLTS/60 HZ	SHPG. WT.	
						LB.	KG.
A-876-99	Circuit Mod.	Even Hour	-	•	-	3/4	0.3
B-876-99	Circuit Mod.	Even Half Hour	-	•	-	3/4	0.3
D-876-99	Circuit Mod.	Odd Hour	-	•	-	3/4	0.3
E-876-99	Circuit Mod.	Odd Half Hour	-	•	-	3/4	0.3
A-877-00	Circuit Mod.	Even Hour	•	-	120	1	0.5
B-877-00	Circuit Mod.	Even Half Hour	•	-	120	1	0.5
D-877-00	Circuit Mod.	Odd Hour	•	-	120	1	0.5
E-877-00	Circuit Mod.	Odd Half Hour	•	-	120	1	0.5
A-877-20	Circuit Mod.	Even Hour	•	-	208-240	1	0.5
B-877-20	Circuit Mod.	Even Half Hour	•	-	208-240	1	0.5
D-877-20	Circuit Mod.	Odd Hour	•	-	208-240	1	0.5
E-877-20	Circuit Mod.	Odd Half Hour	•	-	208-240	1	0.5
A-878-00		Drive Mod.			120	1	0.5
A-878-20		Drive Mod.			208-240	1	0.5
A-879-99		4-Circuit Frame			-	1-1/2	0.7
A-880-99		8-Circuit Frame			-	1-3/4	0.8

Extra trippers, part number X-7248 (12 per bag). Recognized under the component program of UL and CSA.