

COMMERCIAL REFRIGERATION DEFROST CONTROLS

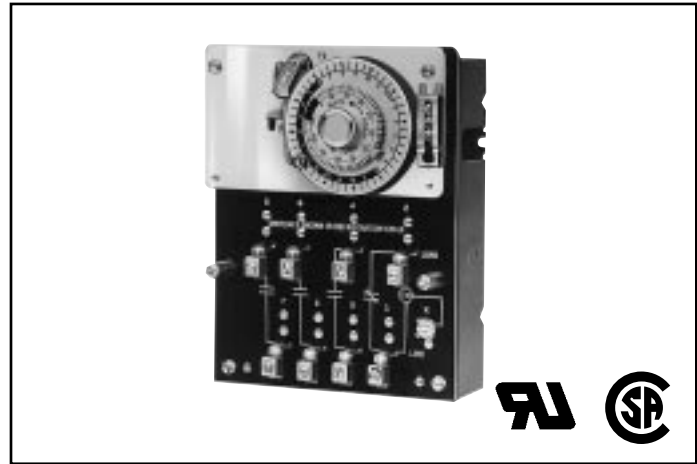
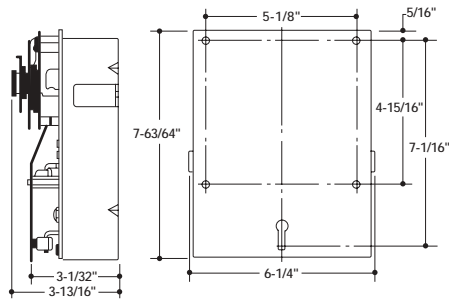
8408 SERIES

FEATURES

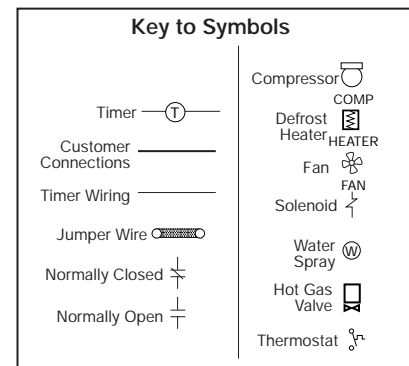
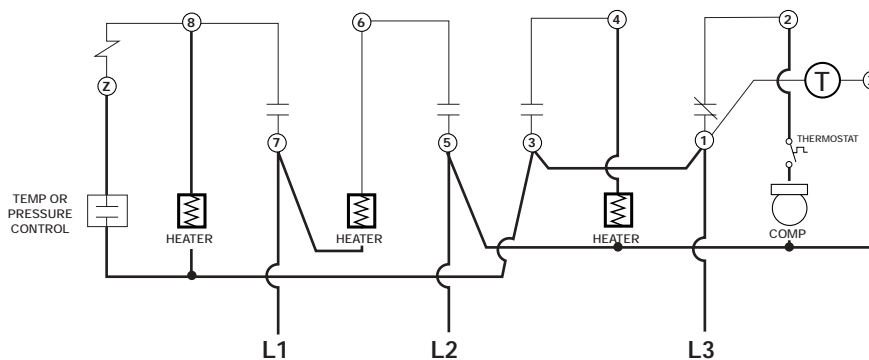
- Defrost termination by an external pressure or temperature control, actual load conditions determine length of defrost cycle.
- Field-proven dial mechanically completes defrost cycle if pressure or temperature termination system fails to function.
- Three 55 amp heater contacts plus one compressor contact.
- One to six defrost cycles per day. Duration from four to 110 minutes in two minute increments. Minimum time between defrost cycles is four hours.
- Lug type terminals for wire from #4 to #14.
- Bracket mounted.

DIMENSIONS

BRACKET MOUNTING DIMENSIONS



WIRING DIAGRAM



ORDERING DATA

UNI-LINE ORDER NO.	VOLTS 60 HZ	INITIATION/TERMINATION	CONTACT CAPACITY				SHPG. WT.	
			HEATER		COMPRESSOR		LB.	KG.
			N.O.	N.O.	N.O.	N.C.		
8408-20B	208-240	Time/Temperature or Pressure	55A	55A	55A	2 Hp 690 VA	3-3/4	1.7

Suffix B = Bracket mount.

Furnished with 4 dial pins, extra pins, part number X3596.