

# COMMERCIAL REFRIGERATION DEFROST CONTROLS

## 8140 SERIES 40 AMP, TIME INITIATED, TEMPERATURE OR PRESSURE TERMINATED

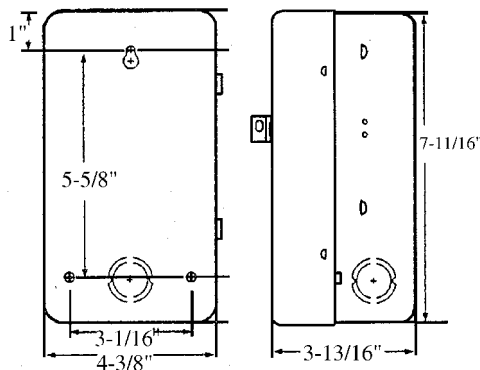
### FEATURES

- Frequency of defrost is one to six cycles per day. A minimum of four hours between successive defrost cycles.
- Adjustable back-up defrost termination from four-110 minutes in two minute increments.
- Control works with an external temperature or pressure sensor.
- Choice of three contact arrangements for electric heat, compressor shutdown or hot gas defrost.
- Positive switch action slider bar.
- Switch ratings per pole: 40 amp, 2 hp, 690 VA pilot duty, 120-240 volts AC.
- Heavy steel enclosure. Gray finish. Knockouts at bottom, back and sides. Hasp and staple for padlock. Available on bracket for sub-panel mounting.
- Operating voltage: 120 or 208-240 volt, 60 Hz (50 Hz - see chart below).
- Heavy duty, synchronous industrial type motor.
- First transfer after refrigeration cycle: (A633-20)  
2-4 remains closed (compressor).  
1-3 opens (fan).  
3-N remains open (heaters).
- Second transfer: (3-6 minutes after the first)  
2-4 opens (compressor).  
1-3 remains open (fan).  
3-N closes (heaters).
- Shipping weight = 3-3/4 lb. (1.7 kg).

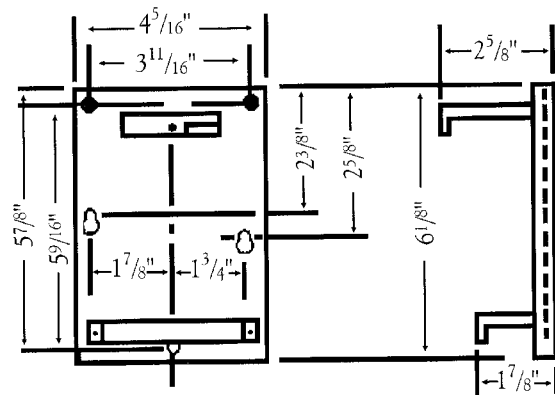


### DIMENSIONS

#### ENCLOSURE MOUNTING DIMENSIONS



#### BRACKET MOUNTING DIMENSIONS



### ORDERING DATA

UNI-LINE ORDER NO.	BRACKET AVAILABLE	50 HZ	VOLTS/60 HZ	NORMAL POSITION OF CONTACTS DURING REFRIGERATION CYCLE		
				CONTACT 3-N	CONTACT 1-3	CONTACT 2-4
8141-00	•	•	120	Closed	Open	Closed
8141-20	•	•	208/240	Closed	Open	Closed
8143-00	•	-	120	Open	Closed	Open
8143-20	•	-	208/240	Open	Closed	Open
8145-00	•	•	120	None	Open	Closed
8145-20	•	•	208/240	None	Open	Closed
E-357-00(1)	•	-	120V	None	Open	Closed
A-633-20(2)	•	-	208/240	Open	Closed	Open

(1) 48-hour dial bracket mount  
(2) 24-hour dial bracket mount

Control supplied with 4 dial pins.  
Extra pins, part number X-3596.