

COMMERCIAL REFRIGERATION DEFROST CONTROLS

8040 SERIES DEFROST CONTROLS 40 AMP, TIME INITIATED, TIME TERMINATED

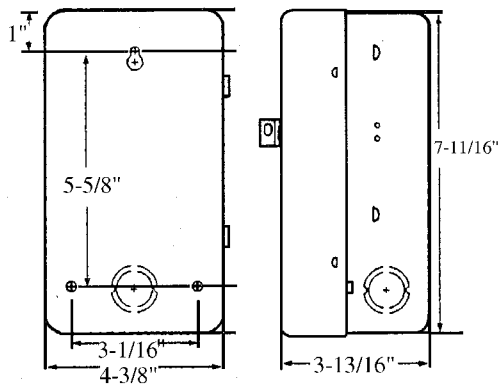
FEATURES

- Frequency of defrost initiation is adjustable from one to six cycles per day. Minimum of four hours between successive operations.
- Duration of defrost cycle adjustable from four to 110 minutes in two minute increments.
- Accuracy of defrost duration +/- two minutes.
- Choice of four contact arrangements for electric heat, hot gas or compressor shutdown defrost.
- Positive switch action slider bar.
- Switch rating per pole: 40 amps, 2 hp per pole; 690 VA pilot duty 120-240 volts AC.
- Heavy duty steel enclosure. Gray finish. Knockouts on bottom, back and sides. Hasp and staple for padlock. Available on bracket for sub-panel mounting.
- Operating voltage: 120 or 208-240 volts, 60 Hz (50 Hz - see chart below).
- Heavy duty synchronous industrial type motor.
- Shipping weight = 3-1/2 lbs. (1.6 kg).

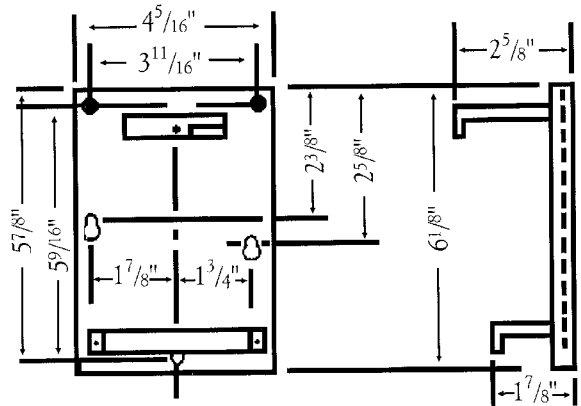


DIMENSIONS

ENCLOSURE MOUNTING DIMENSIONS



BRACKET MOUNTING DIMENSIONS



ORDERING DATA

UNI-LINE ORDER NO.	BRACKET AVAIL.	MOVEMENT AVAIL.	50 HZ AVAIL.	VOLTS 60 HZ	DESCRIPTION	SWITCH ARRANGEMENT CONTACTS			ADJ. LENGTH OF DEFROST
						2-4	1-3	3-N	
8041-00	•	-	-	120	For Electric Heat Defrosting (Auxiliary Contract Models)	Closed	Open	Closed	4-110 Min.
8041-20	-	-	•	208-240					
8045-00	•	-	-	120	For Electric Heat, Hot Gas, or Compressor Shutdown Defrosting	Closed	Open	None	4-110 Min.
8045-20	•	•	•	208-240					
8047-00	-	-	-	120	For Electric Heat Defrosting (Auxiliary Contract Models)	Open	Open	Closed	4-110 Min.
8047-20	-	-	•	208-240		Open	Open	Closed	4-110 Min.

Control supplied with four dial pins. Extra pins, part number X-3596.